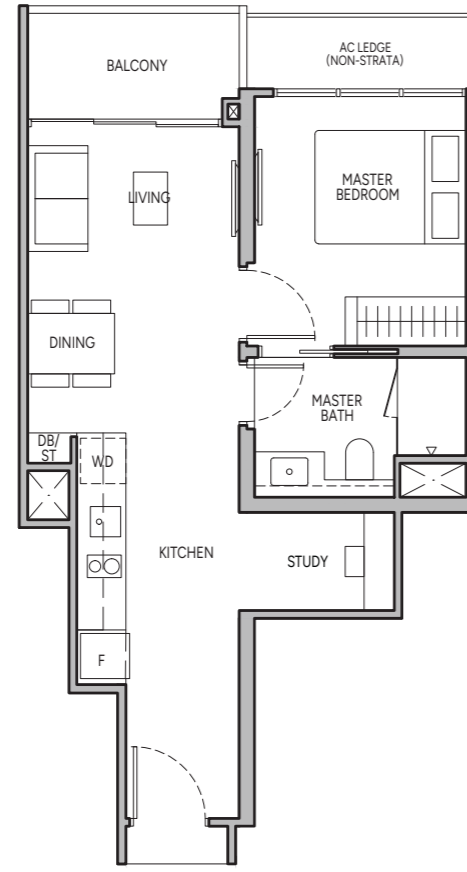


# 1-BEDROOM + STUDY

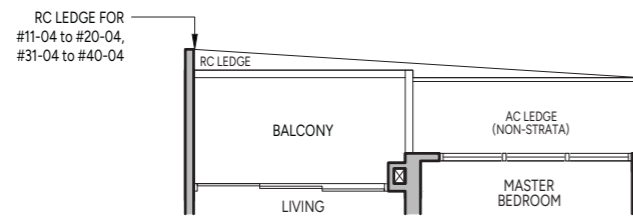
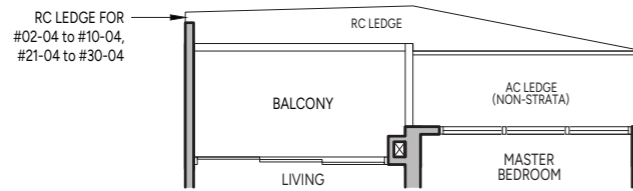
## Type A1S

48 sq m / 517 sq ft

BLK 12 : #02-14 to #40-14



BLK 10 : #02-04 to #40-04

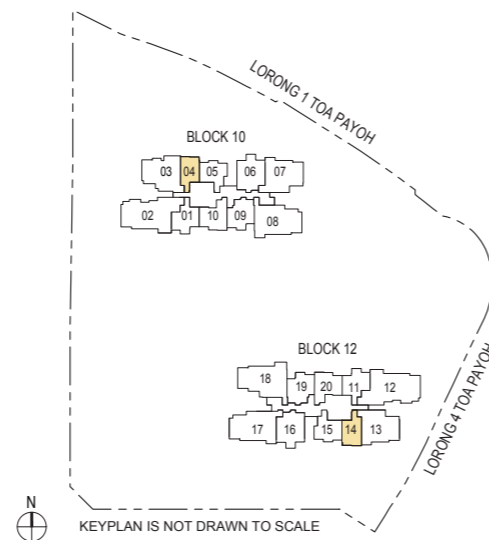


**Legend (Where Applicable)**

- DB/ST - Distribution Board/Storage
- WD - Washer cum Dryer
- W/D - Washer & Dryer
- F - Fridge
- WC - Water Closet
- HS - Household Shelter
- RC - Reinforced Concrete
- AC - Air-Conditioner

Wall not allowed to be hacked or altered

Area includes balcony where applicable and excludes among others, the RC - Reinforced Concrete Ledge and A/C - Air Conditioner Ledge. The plans are subject to change as may be required by relevant authorities. All floor plans and areas are subject to final survey. The balcony shall not be enclosed unless with the approved balcony screen, more particularly illustrated under the header "Approved Balcony Screen". Please refer to the letter containing the Particulars, Documents and Information relating to the development and the unit for the floor plan relating to the unit you intend to purchase. The Sale and Purchase Agreement contains the entire agreement between the developer and the purchaser and supersedes and cancels in all respects all previous representations, warranties, promises, inducements or statements of intention, whether written or oral made by the developer and/or the developer's agent which are not embodied in the Sale and Purchase Agreement.

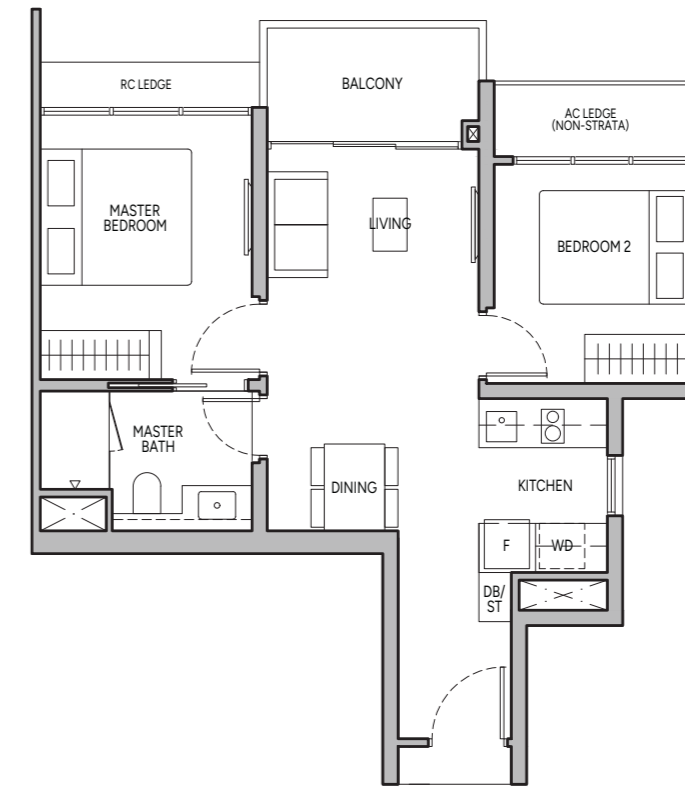


# 2-BEDROOM

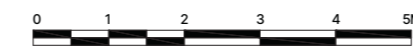
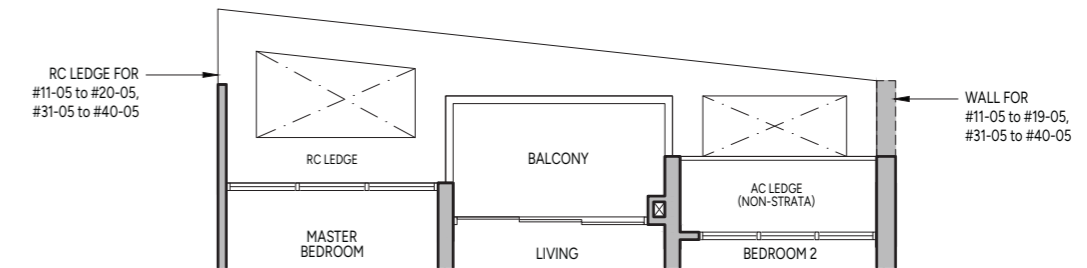
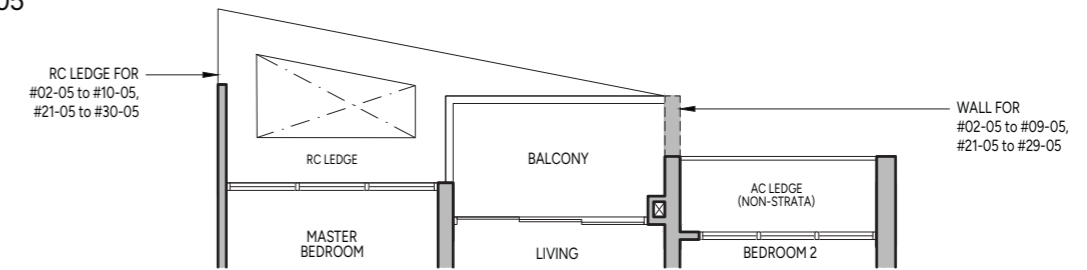
## Type B1

55 sq m / 592 sq ft

BLK 12 : #02-15 to #40-15



BLK 10 : #02-05 to #40-05

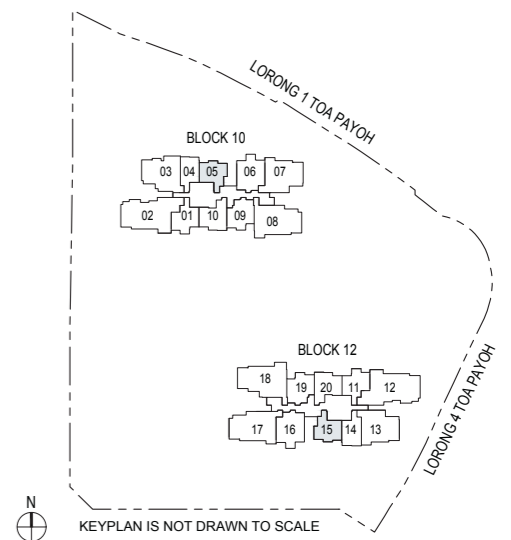


**Legend (Where Applicable)**

- DB/ST - Distribution Board/Storage
- WD - Washer cum Dryer
- W/D - Washer & Dryer
- F - Fridge
- WC - Water Closet
- HS - Household Shelter
- RC - Reinforced Concrete
- AC - Air-Conditioner

Wall not allowed to be hacked or altered

Area includes balcony where applicable and excludes among others, the RC - Reinforced Concrete Ledge and A/C - Air Conditioner Ledge. The plans are subject to change as may be required by relevant authorities. All floor plans and areas are subject to final survey. The balcony shall not be enclosed unless with the approved balcony screen, more particularly illustrated under the header "Approved Balcony Screen". Please refer to the letter containing the Particulars, Documents and Information relating to the development and the unit for the floor plan relating to the unit you intend to purchase. The Sale and Purchase Agreement contains the entire agreement between the developer and the purchaser and supersedes and cancels in all respects all previous representations, warranties, promises, inducements or statements of intention, whether written or oral made by the developer and/or the developer's agent which are not embodied in the Sale and Purchase Agreement.



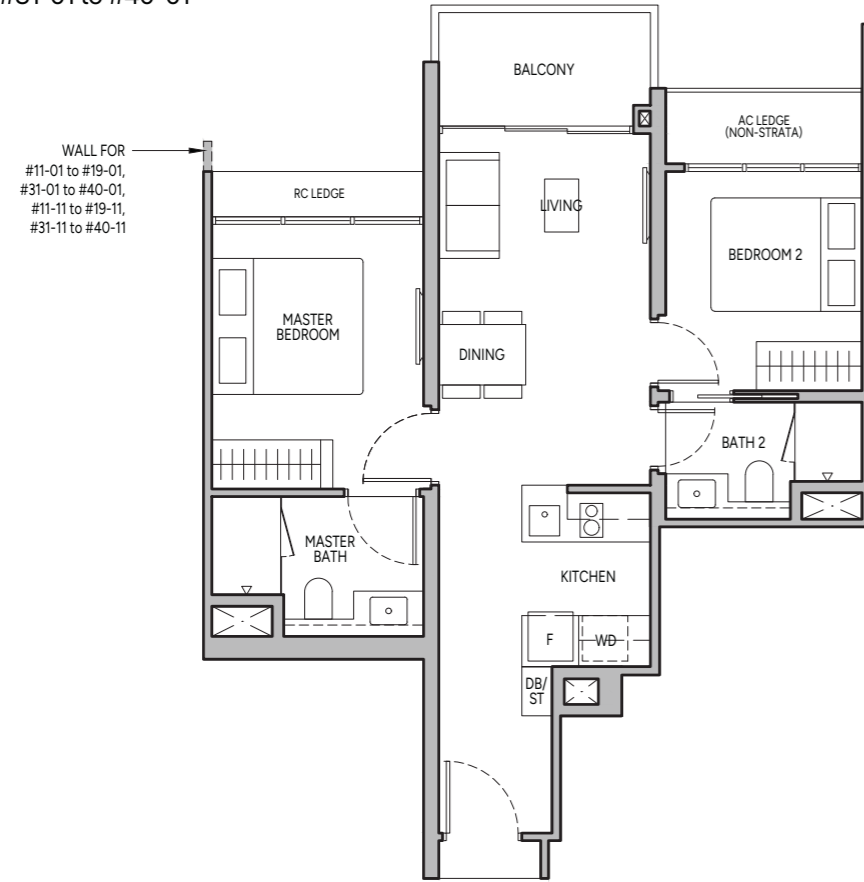
# 2-BEDROOM

## Type B2

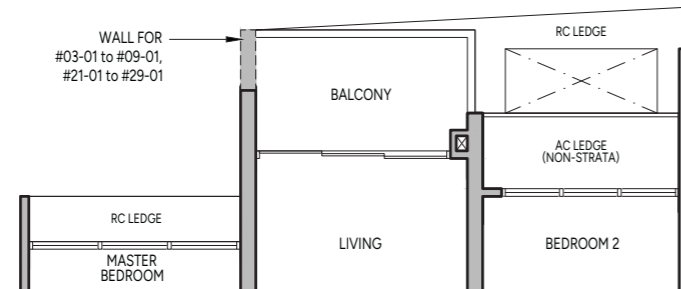
60 sq m / 646 sq ft

BLK 10 : #11-01 to #20-01, #31-01 to #40-01

BLK 12 : #02-11 to #40-11



BLK 10 : #03-01 to #10-01, #21-01 to #30-01

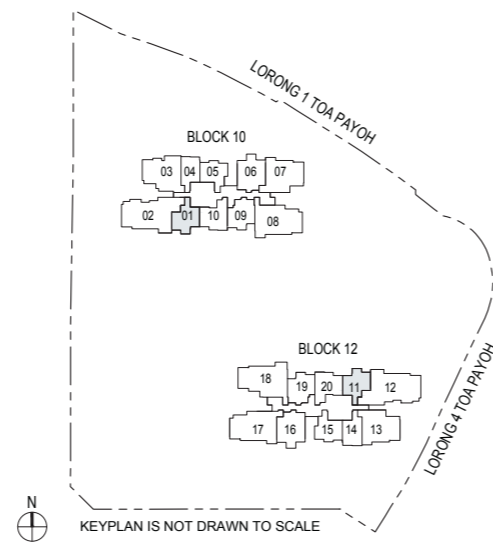


**Legend (Where Applicable)**

- DB/ST - Distribution Board/Storage
- WD - Washer cum Dryer
- W/D - Washer & Dryer
- F - Fridge
- WC - Water Closet
- HS - Household Shelter
- RC - Reinforced Concrete
- AC - Air-Conditioner

Wall not allowed to be hacked or altered

Area includes balcony where applicable and excludes among others, the RC - Reinforced Concrete Ledge and A/C - Air Conditioner Ledge. The plans are subject to change as may be required by relevant authorities. All floor plans and areas are subject to final survey. The balcony shall not be enclosed unless with the approved balcony screen, more particularly illustrated under the header "Approved Balcony Screen". Please refer to the letter containing the Particulars, Documents and Information relating to the development and the unit for the floor plan relating to the unit you intend to purchase. The Sale and Purchase Agreement contains the entire agreement between the developer and the purchaser and supersedes and cancels in all respects all previous representations, warranties, promises, inducements or statements of intention, whether written or oral made by the developer and/or the developer's agent which are not embodied in the Sale and Purchase Agreement.



KEYPLAN IS NOT DRAWN TO SCALE

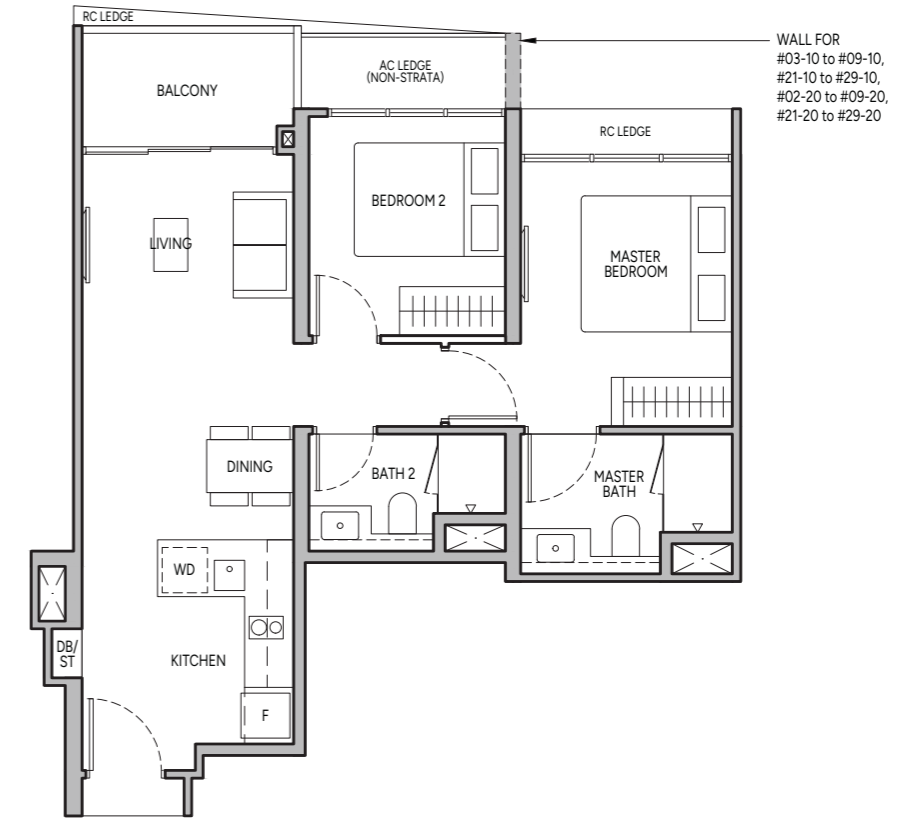
# 2-BEDROOM PREMIUM

## Type B3

63 sq m / 678 sq ft

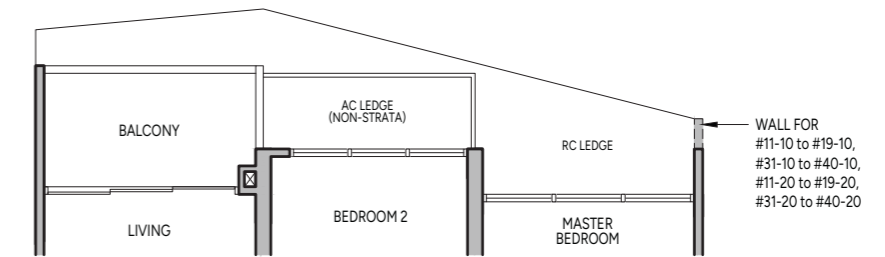
BLK 10 : #03-10 to #10-10, #21-10 to #30-10

BLK 12 : #02-20 to #10-20, #21-20 to #30-20



BLK 10 : #11-10 to #20-10, #31-10 to #40-10

BLK 12 : #11-20 to #20-20, #31-20 to #40-20

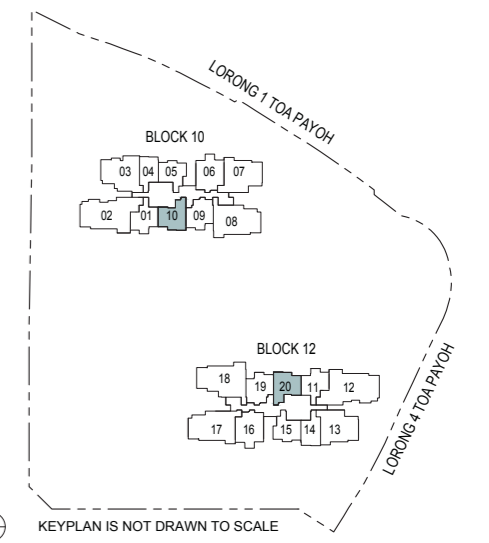


**Legend (Where Applicable)**

- DB/ST - Distribution Board/Storage
- WD - Washer cum Dryer
- W/D - Washer & Dryer
- F - Fridge
- WC - Water Closet
- HS - Household Shelter
- RC - Reinforced Concrete
- AC - Air-Conditioner

Wall not allowed to be hacked or altered

Area includes balcony where applicable and excludes among others, the RC - Reinforced Concrete Ledge and A/C - Air Conditioner Ledge. The plans are subject to change as may be required by relevant authorities. All floor plans and areas are subject to final survey. The balcony shall not be enclosed unless with the approved balcony screen, more particularly illustrated under the header "Approved Balcony Screen". Please refer to the letter containing the Particulars, Documents and Information relating to the development and the unit for the floor plan relating to the unit you intend to purchase. The Sale and Purchase Agreement contains the entire agreement between the developer and the purchaser and supersedes and cancels in all respects all previous representations, warranties, promises, inducements or statements of intention, whether written or oral made by the developer and/or the developer's agent which are not embodied in the Sale and Purchase Agreement.



KEYPLAN IS NOT DRAWN TO SCALE

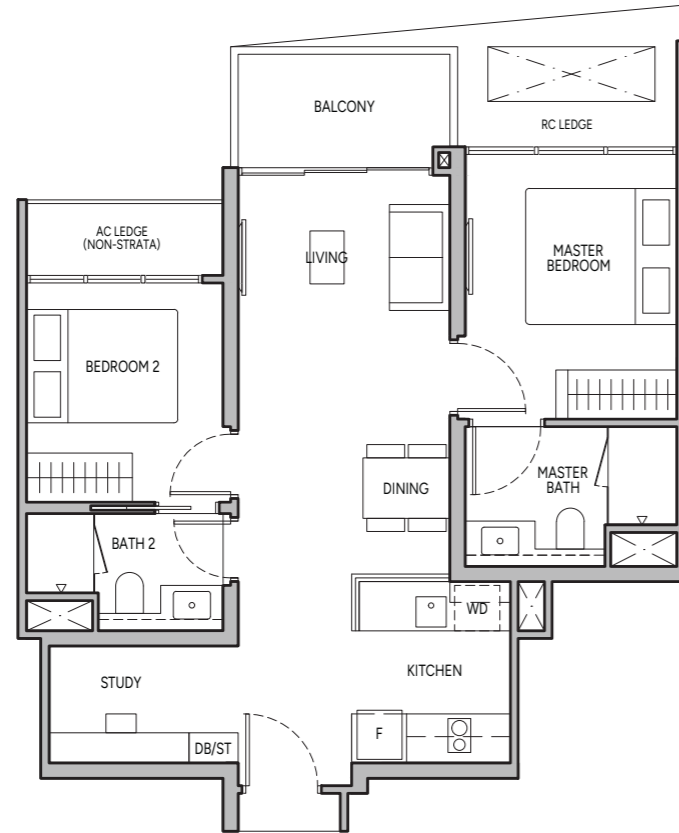
# 2-BEDROOM PREMIUM + STUDY

## Type B4S

65 sq m / 700 sq ft

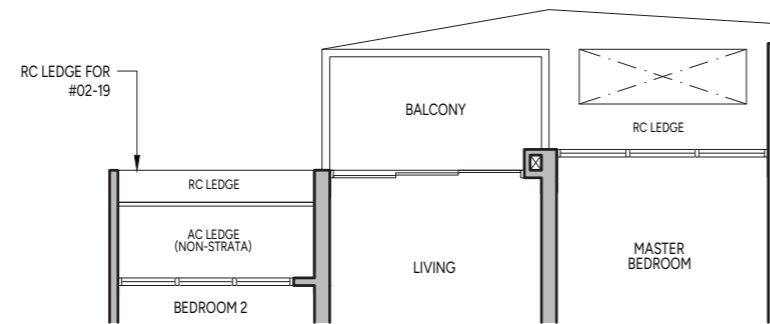
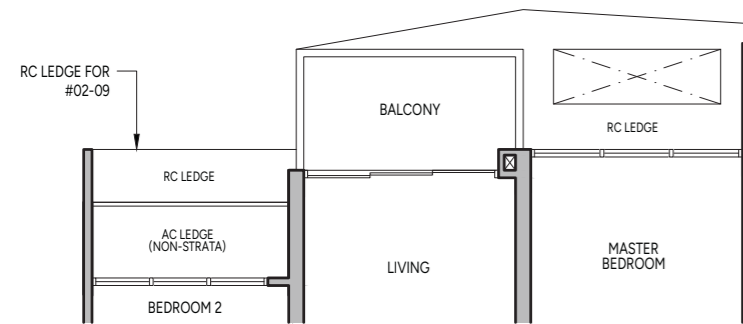
BLK 10 : #11-09 to #20-09, #31-09 to #40-09

BLK 12 : #11-19 to #20-19, #31-19 to #40-19



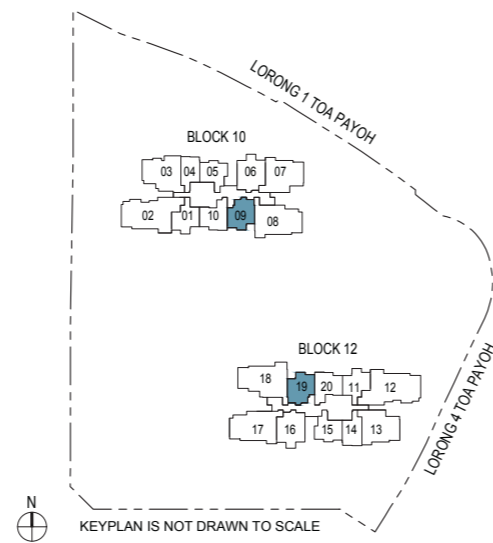
BLK 10 : #02-09 to #10-09, #21-09 to #30-09

BLK 12 : #02-19 to #10-19, #21-19 to #30-19



- Legend (Where Applicable)**
- DB/ST - Distribution Board/Storage
  - WD - Washer cum Dryer
  - W/D - Washer & Dryer
  - F - Fridge
  - WC - Water Closet
  - HS - Household Shelter
  - RC - Reinforced Concrete
  - AC - Air-Conditioner
  - Wall not allowed to be hacked or altered

Area includes balcony where applicable and excludes among others, the RC - Reinforced Concrete Ledge and A/C - Air Conditioner Ledge. The plans are subject to change as may be required by relevant authorities. All floor plans and areas are subject to final survey. The balcony shall not be enclosed unless with the approved balcony screen, more particularly illustrated under the header "Approved Balcony Screen". Please refer to the letter containing the Particulars, Documents and Information relating to the development and the unit for the floor plan relating to the unit you intend to purchase. The Sale and Purchase Agreement contains the entire agreement between the developer and the purchaser and supersedes and cancels in all respects all previous representations, warranties, promises, inducements or statements of intention, whether written or oral made by the developer and/or the developer's agent which are not embodied in the Sale and Purchase Agreement.



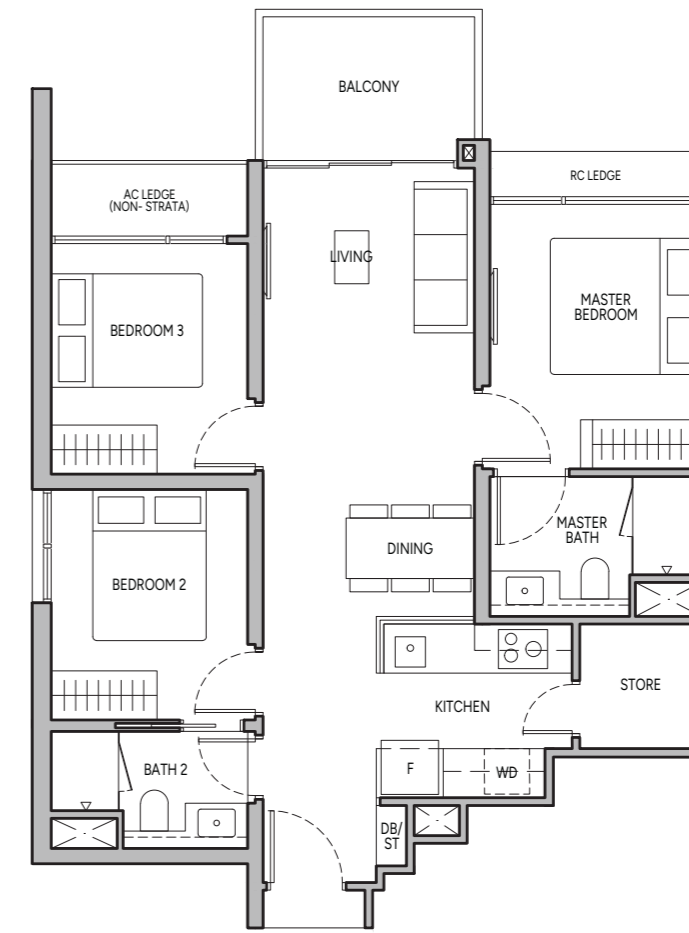
KEYPLAN IS NOT DRAWN TO SCALE

# 3-BEDROOM

## Type C1

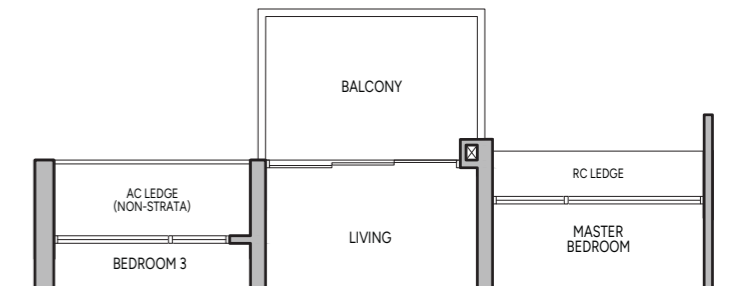
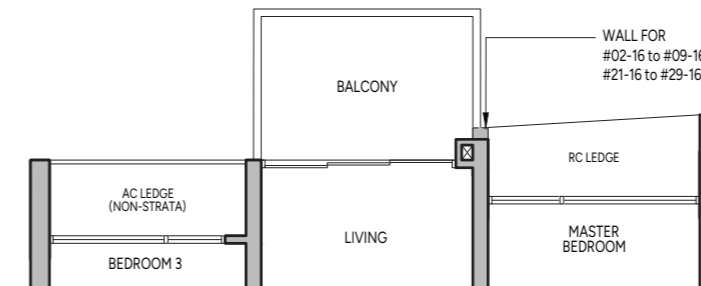
79 sq m / 850 sq ft

BLK 10 : #02-06 to #40-06



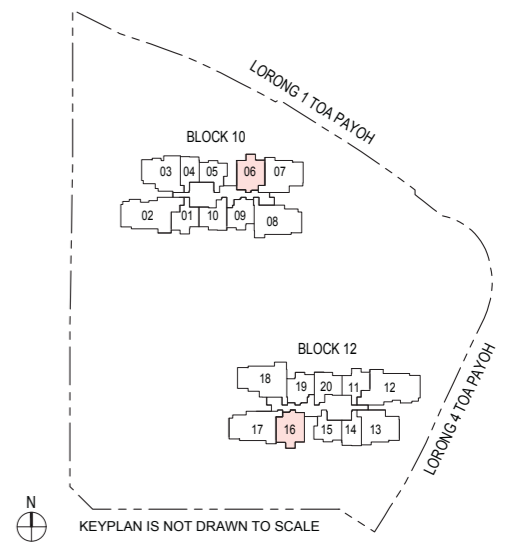
BLK 12 : #02-16 to #10-16, #21-16 to #30-16

BLK 12 : #11-16 to #20-16, #31-16 to #40-16



- Legend (Where Applicable)**
- DB/ST - Distribution Board/Storage
  - WD - Washer cum Dryer
  - W/D - Washer & Dryer
  - F - Fridge
  - WC - Water Closet
  - HS - Household Shelter
  - RC - Reinforced Concrete
  - AC - Air-Conditioner
  - Wall not allowed to be hacked or altered

Area includes balcony where applicable and excludes among others, the RC - Reinforced Concrete Ledge and A/C - Air Conditioner Ledge. The plans are subject to change as may be required by relevant authorities. All floor plans and areas are subject to final survey. The balcony shall not be enclosed unless with the approved balcony screen, more particularly illustrated under the header "Approved Balcony Screen". Please refer to the letter containing the Particulars, Documents and Information relating to the development and the unit for the floor plan relating to the unit you intend to purchase. The Sale and Purchase Agreement contains the entire agreement between the developer and the purchaser and supersedes and cancels in all respects all previous representations, warranties, promises, inducements or statements of intention, whether written or oral made by the developer and/or the developer's agent which are not embodied in the Sale and Purchase Agreement.



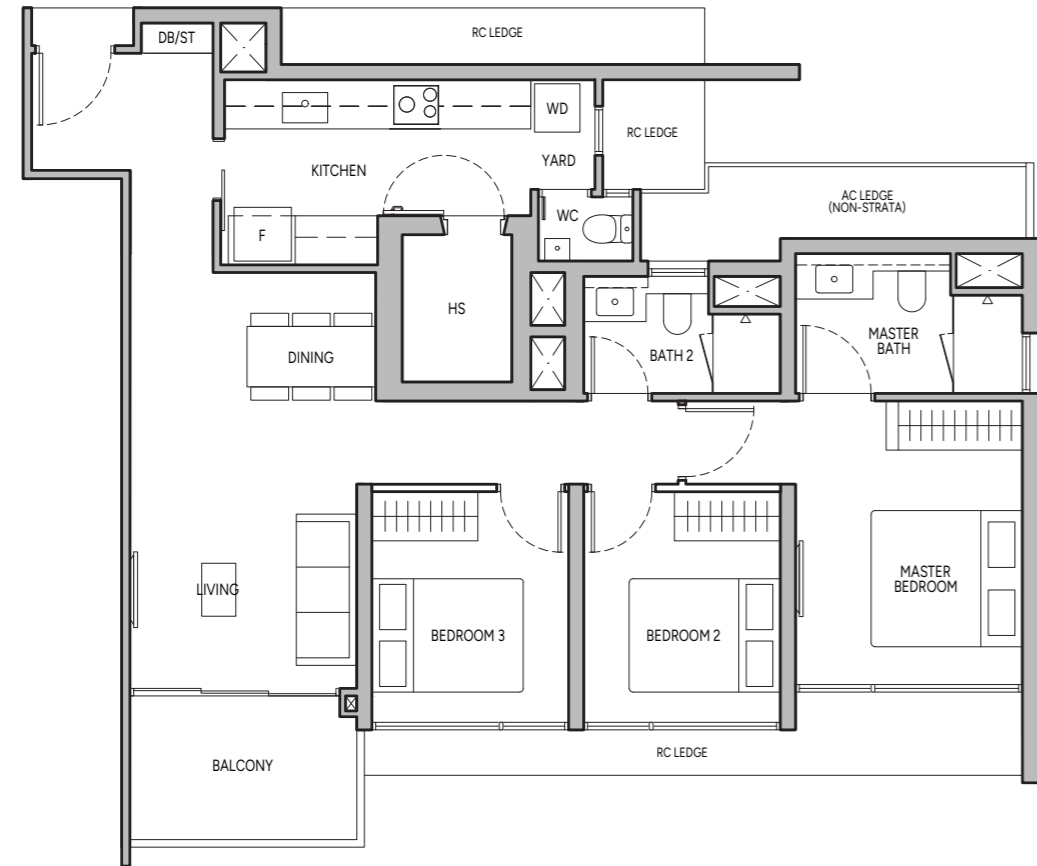
KEYPLAN IS NOT DRAWN TO SCALE

# 3-BEDROOM PREMIUM

## Type C2

95 sq m / 1023 sq ft

BLK 12 : #02-13 to #40-13

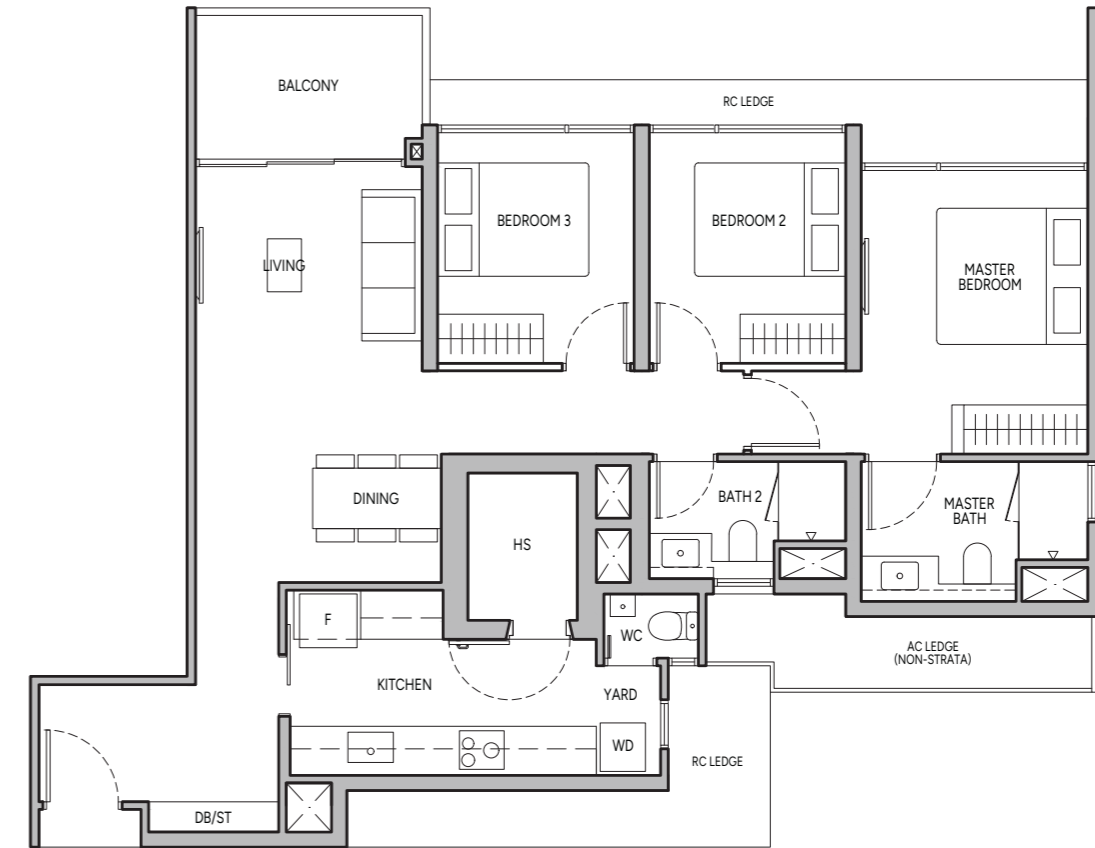


# 3-BEDROOM PREMIUM

## Type C2A

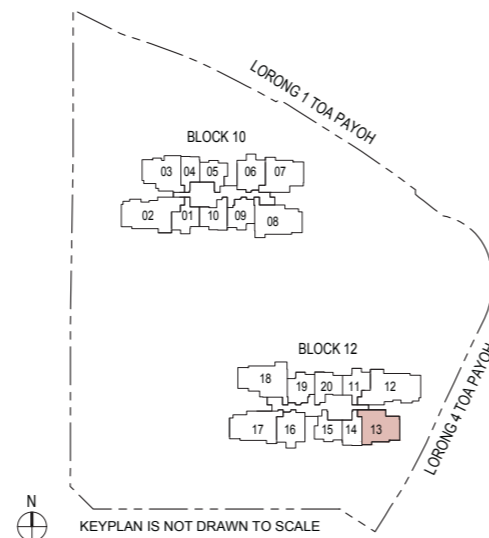
97 sq m / 1044 sq ft

BLK 10 : #02-07 to #40-07



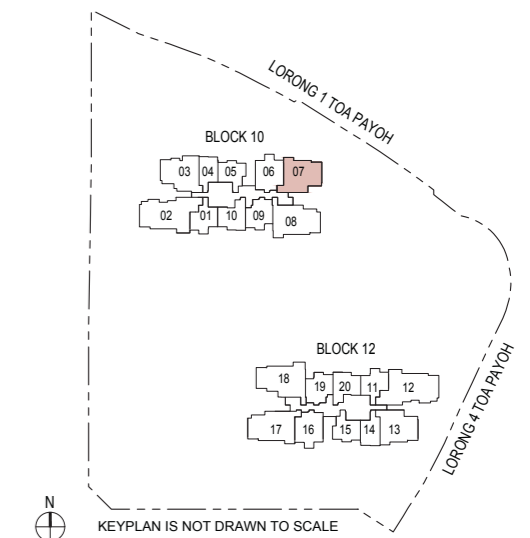
**Legend (Where Applicable)**  
 DB/ST - Distribution Board/Storage    WD - Washer cum Dryer    W/D - Washer & Dryer    F - Fridge  
 WC - Water Closet    HS - Household Shelter    RC - Reinforced Concrete    AC - Air-Conditioner  
 Wall not allowed to be hacked or altered

Area includes balcony where applicable and excludes among others, the RC - Reinforced Concrete Ledge and A/C - Air Conditioner Ledge. The plans are subject to change as may be required by relevant authorities. All floor plans and areas are subject to final survey. The balcony shall not be enclosed unless with the approved balcony screen, more particularly illustrated under the header "Approved Balcony Screen". Please refer to the letter containing the Particulars, Documents and Information relating to the development and the unit for the floor plan relating to the unit you intend to purchase. The Sale and Purchase Agreement contains the entire agreement between the developer and the purchaser and supersedes and cancels in all respects all previous representations, warranties, promises, inducements or statements of intention, whether written or oral made by the developer and/or the developer's agent which are not embodied in the Sale and Purchase Agreement.



**Legend (Where Applicable)**  
 DB/ST - Distribution Board/Storage    WD - Washer cum Dryer    W/D - Washer & Dryer    F - Fridge  
 WC - Water Closet    HS - Household Shelter    RC - Reinforced Concrete    AC - Air-Conditioner  
 Wall not allowed to be hacked or altered

Area includes balcony where applicable and excludes among others, the RC - Reinforced Concrete Ledge and A/C - Air Conditioner Ledge. The plans are subject to change as may be required by relevant authorities. All floor plans and areas are subject to final survey. The balcony shall not be enclosed unless with the approved balcony screen, more particularly illustrated under the header "Approved Balcony Screen". Please refer to the letter containing the Particulars, Documents and Information relating to the development and the unit for the floor plan relating to the unit you intend to purchase. The Sale and Purchase Agreement contains the entire agreement between the developer and the purchaser and supersedes and cancels in all respects all previous representations, warranties, promises, inducements or statements of intention, whether written or oral made by the developer and/or the developer's agent which are not embodied in the Sale and Purchase Agreement.

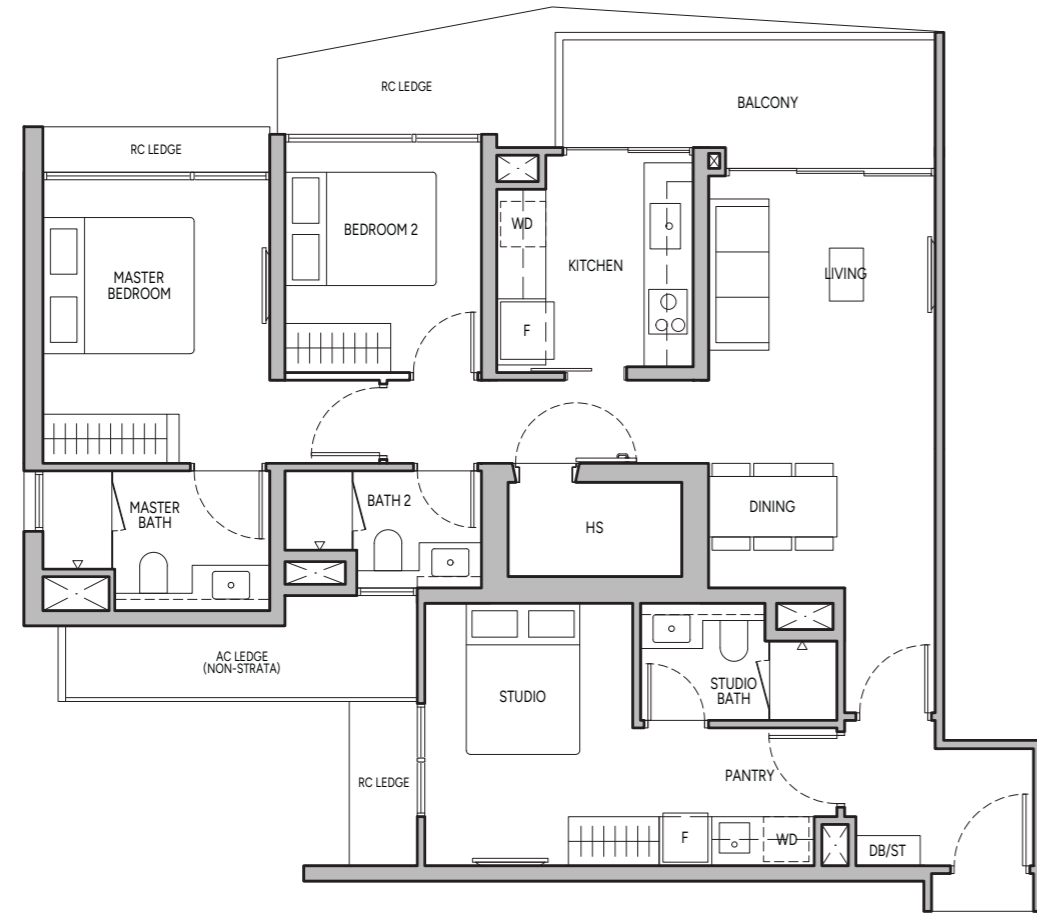


# 3-BEDROOM DUAL KEY

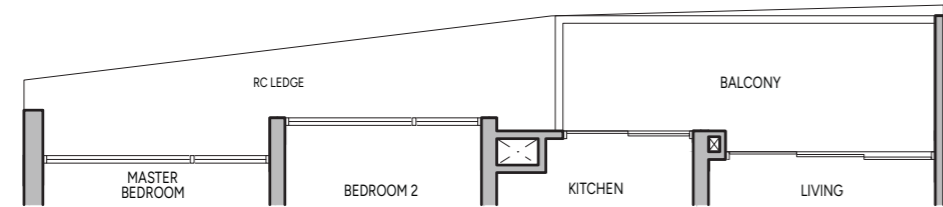
## Type C3DK

105 sq m / 1130 sq ft

BLK 10 : #11-03 to #20-03, #31-03 to #40-03

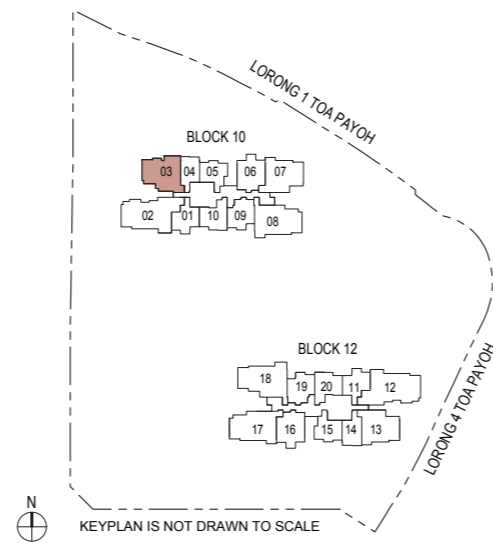


BLK 10 : #02-03 to #10-03, #21-03 to #30-03



**Legend (Where Applicable)**  
 DB/ST - Distribution Board/Storage    WD - Washer cum Dryer    W/D - Washer & Dryer    F - Fridge  
 WC - Water Closet    HS - Household Shelter    RC - Reinforced Concrete    AC - Air-Conditioner  
 Wall not allowed to be hacked or altered

Area includes balcony where applicable and excludes among others, the RC - Reinforced Concrete Ledge and A/C - Air Conditioner Ledge. The plans are subject to change as may be required by relevant authorities. All floor plans and areas are subject to final survey. The balcony shall not be enclosed unless with the approved balcony screen, more particularly illustrated under the header "Approved Balcony Screen". Please refer to the letter containing the Particulars, Documents and Information relating to the development and the unit for the floor plan relating to the unit you intend to purchase. The Sale and Purchase Agreement contains the entire agreement between the developer and the purchaser and supersedes and cancels in all respects all previous representations, warranties, promises, inducements or statements of intention, whether written or oral made by the developer and/or the developer's agent which are not embodied in the Sale and Purchase Agreement.



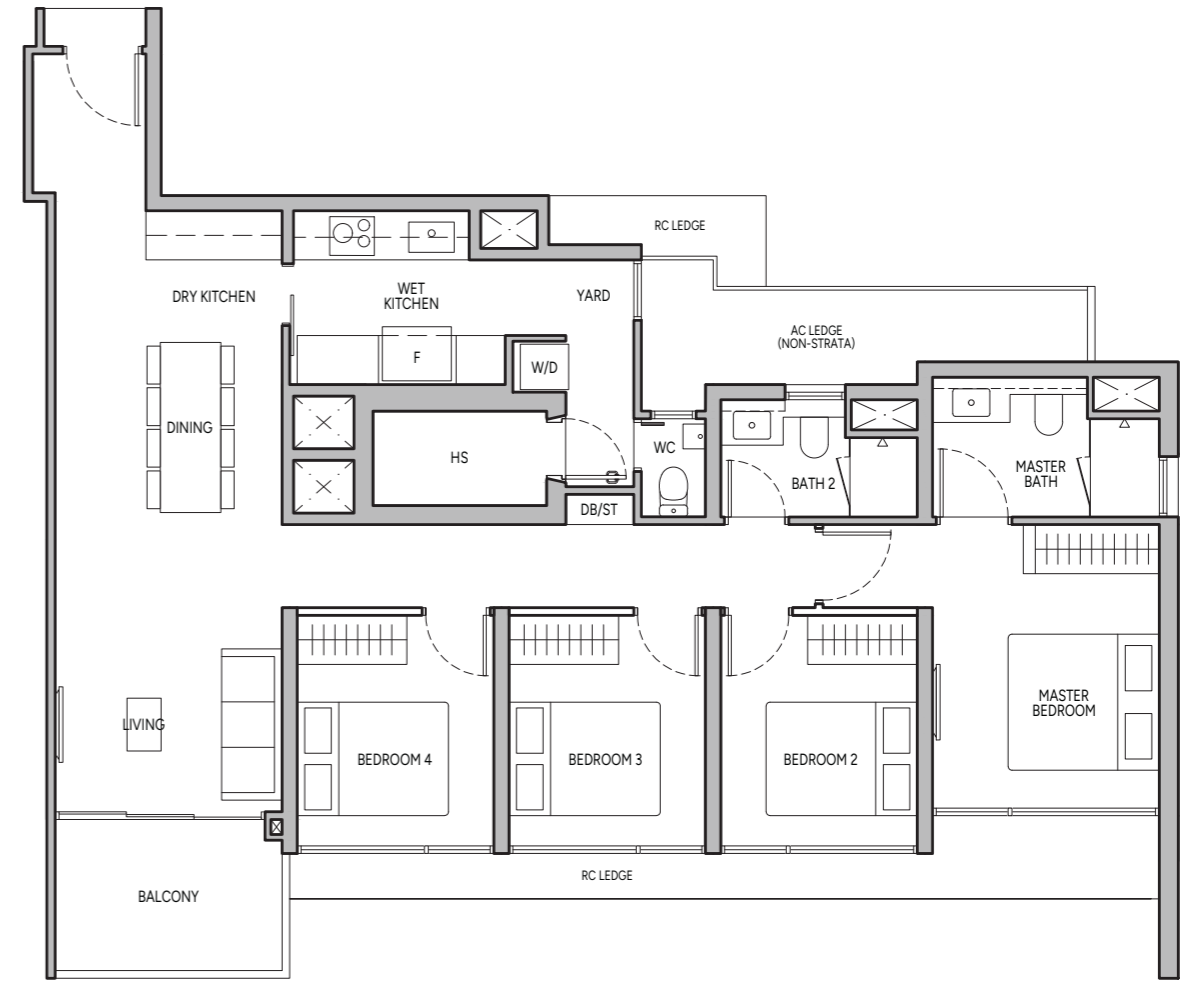
KEYPLAN IS NOT DRAWN TO SCALE

# 4-BEDROOM

## Type D1

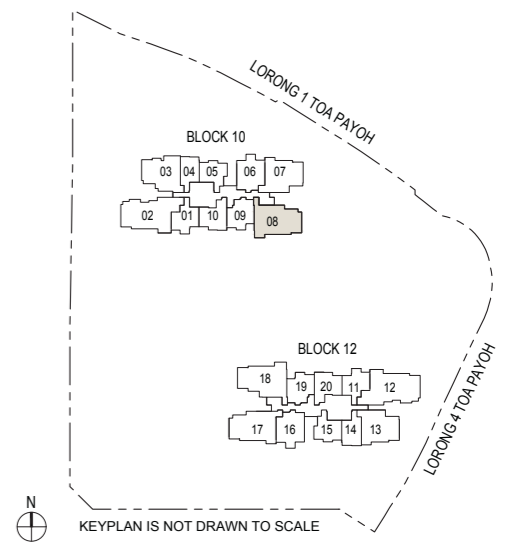
113 sq m / 1216 sq ft

BLK 10 : #02-08 to #40-08



**Legend (Where Applicable)**  
 DB/ST - Distribution Board/Storage    WD - Washer cum Dryer    W/D - Washer & Dryer    F - Fridge  
 WC - Water Closet    HS - Household Shelter    RC - Reinforced Concrete    AC - Air-Conditioner  
 Wall not allowed to be hacked or altered

Area includes balcony where applicable and excludes among others, the RC - Reinforced Concrete Ledge and A/C - Air Conditioner Ledge. The plans are subject to change as may be required by relevant authorities. All floor plans and areas are subject to final survey. The balcony shall not be enclosed unless with the approved balcony screen, more particularly illustrated under the header "Approved Balcony Screen". Please refer to the letter containing the Particulars, Documents and Information relating to the development and the unit for the floor plan relating to the unit you intend to purchase. The Sale and Purchase Agreement contains the entire agreement between the developer and the purchaser and supersedes and cancels in all respects all previous representations, warranties, promises, inducements or statements of intention, whether written or oral made by the developer and/or the developer's agent which are not embodied in the Sale and Purchase Agreement.



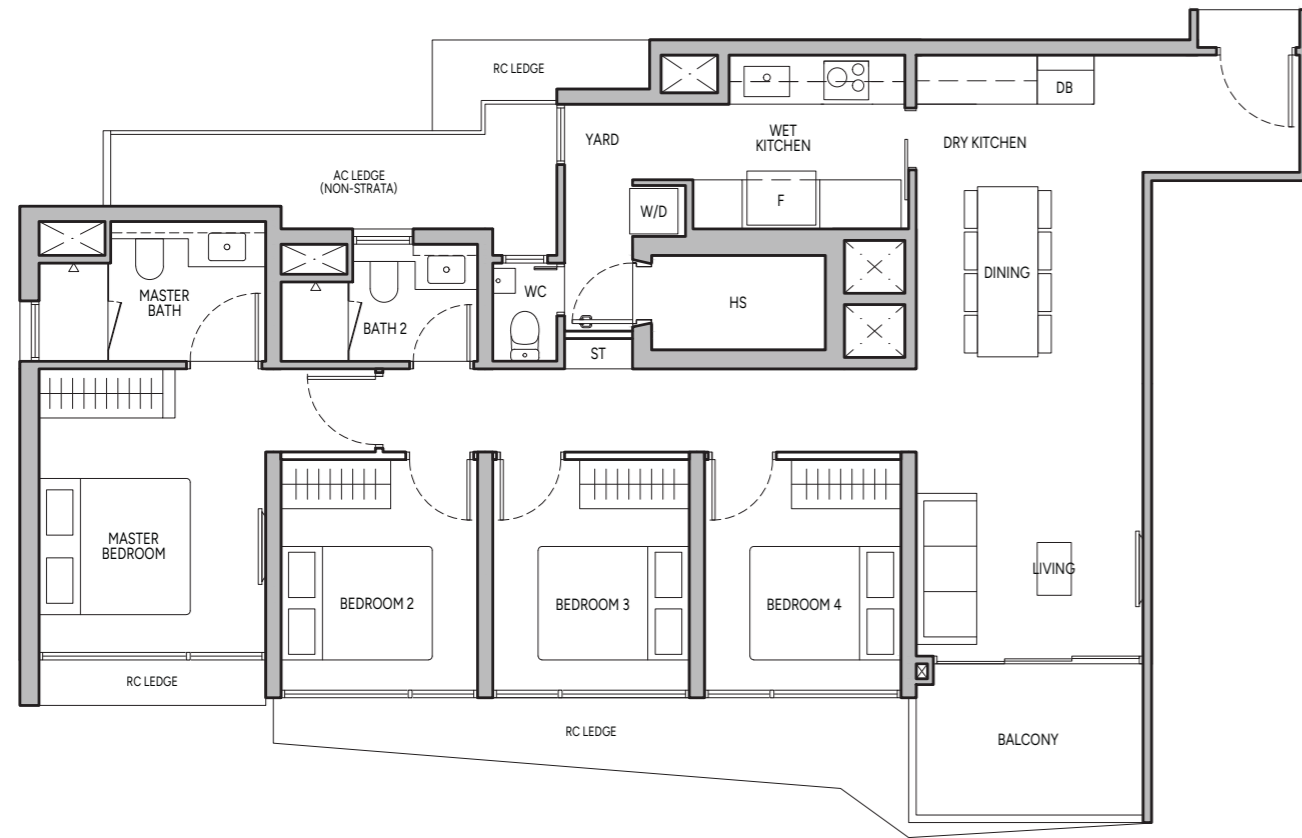
KEYPLAN IS NOT DRAWN TO SCALE

# 4-BEDROOM

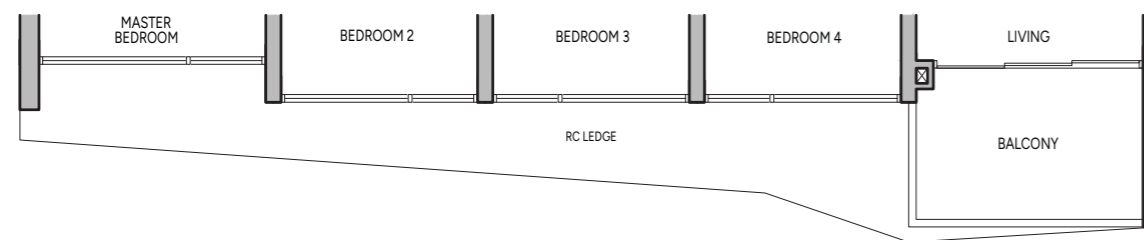
## Type D2

113 sq m / 1216 sq ft

BLK 12 : #11-17 to #20-17, #31-17 to #40-17

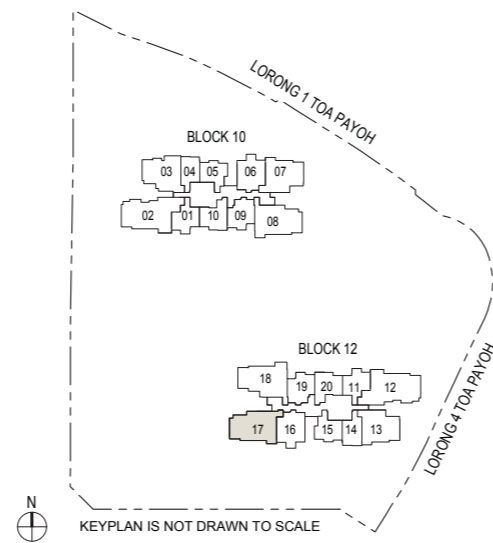


BLK 12 : #02-17 to #10-17, #21-17 to #30-17



**Legend (Where Applicable)**  
 DB/ST - Distribution Board/Storage    WD - Washer cum Dryer    W/D - Washer & Dryer    F - Fridge  
 WC - Water Closet    HS - Household Shelter    RC - Reinforced Concrete    AC - Air-Conditioner  
 Wall not allowed to be hacked or altered

Area includes balcony where applicable and excludes among others, the RC - Reinforced Concrete Ledge and A/C - Air Conditioner Ledge. The plans are subject to change as may be required by relevant authorities. All floor plans and areas are subject to final survey. The balcony shall not be enclosed unless with the approved balcony screen, more particularly illustrated under the header "Approved Balcony Screen". Please refer to the letter containing the Particulars, Documents and Information relating to the development and the unit for the floor plan relating to the unit you intend to purchase. The Sale and Purchase Agreement contains the entire agreement between the developer and the purchaser and supersedes and cancels in all respects all previous representations, warranties, promises, inducements or statements of intention, whether written or oral made by the developer and/or the developer's agent which are not embodied in the Sale and Purchase Agreement.

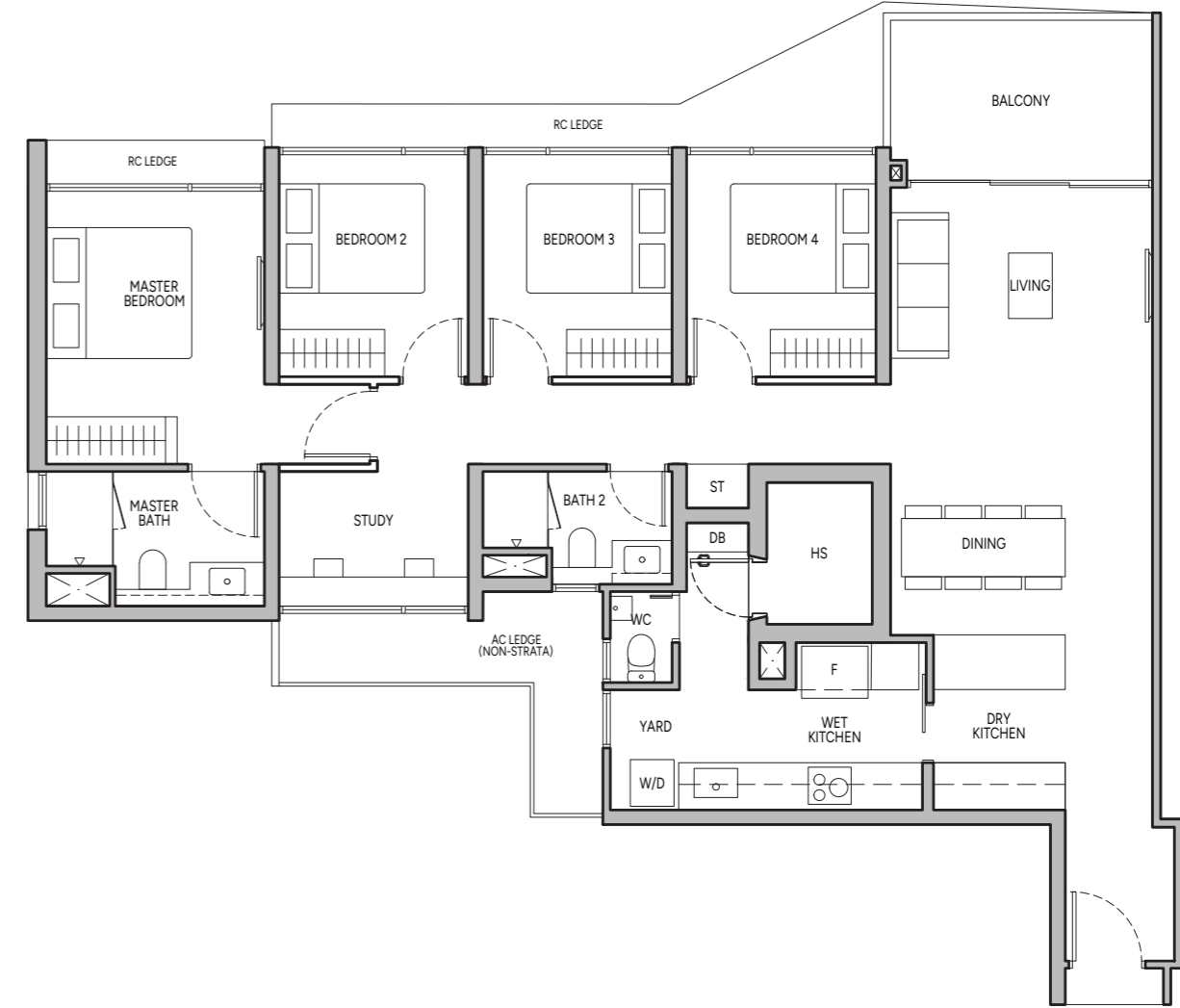


# 4-BEDROOM PREMIUM + STUDY

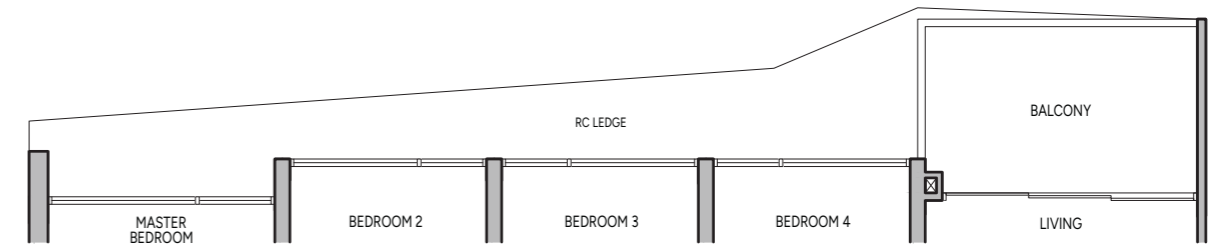
## Type D3S

127 sq m / 1367 sq ft

BLK 12 : #11-18 to #20-18, #31-18 to #40-18

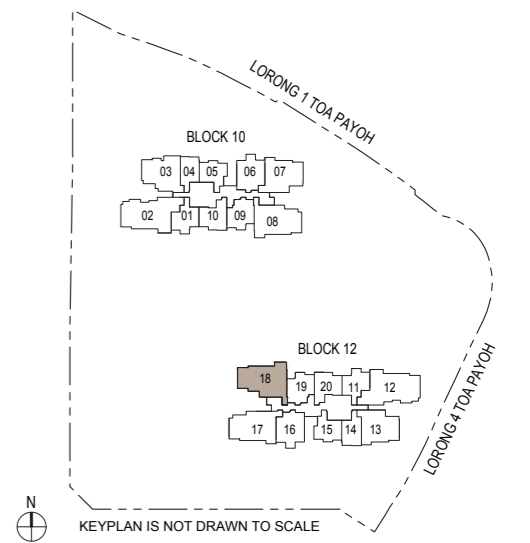


BLK 12 : #02-18 to #10-18, #21-18 to #30-18



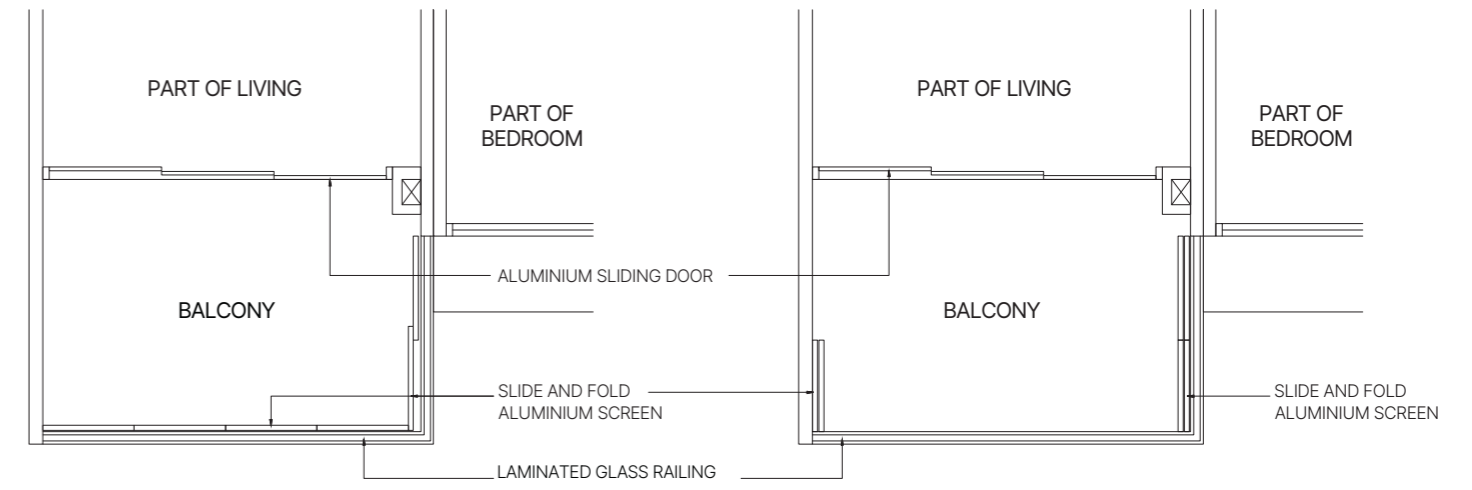
**Legend (Where Applicable)**  
 DB/ST - Distribution Board/Storage    WD - Washer cum Dryer    W/D - Washer & Dryer    F - Fridge  
 WC - Water Closet    HS - Household Shelter    RC - Reinforced Concrete    AC - Air-Conditioner  
 Wall not allowed to be hacked or altered

Area includes balcony where applicable and excludes among others, the RC - Reinforced Concrete Ledge and A/C - Air Conditioner Ledge. The plans are subject to change as may be required by relevant authorities. All floor plans and areas are subject to final survey. The balcony shall not be enclosed unless with the approved balcony screen, more particularly illustrated under the header "Approved Balcony Screen". Please refer to the letter containing the Particulars, Documents and Information relating to the development and the unit for the floor plan relating to the unit you intend to purchase. The Sale and Purchase Agreement contains the entire agreement between the developer and the purchaser and supersedes and cancels in all respects all previous representations, warranties, promises, inducements or statements of intention, whether written or oral made by the developer and/or the developer's agent which are not embodied in the Sale and Purchase Agreement.



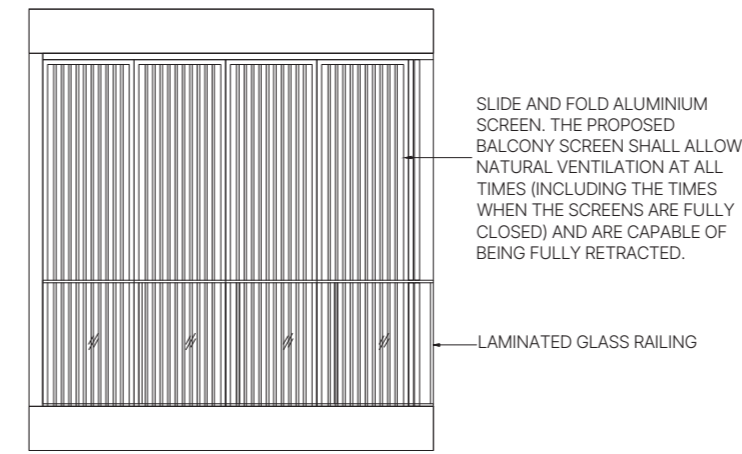
# APPROVED BALCONY SCREEN

## Typical Units

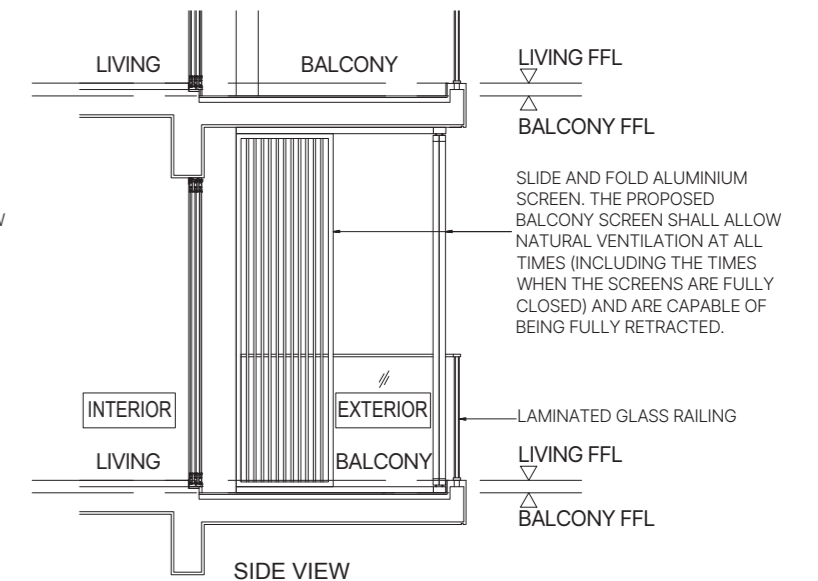


TYPICAL RETRACTABLE BALCONY SCREEN (FULLY CLOSED) - PLAN

TYPICAL RETRACTABLE BALCONY SCREEN (FULLY RETRACTED) - PLAN



FRONT VIEW



SIDE VIEW

SLIDE AND FOLD ALUMINIUM SCREEN. THE PROPOSED BALCONY SCREEN SHALL ALLOW NATURAL VENTILATION AT ALL TIMES (INCLUDING THE TIMES WHEN THE SCREENS ARE FULLY CLOSED) AND ARE CAPABLE OF BEING FULLY RETRACTED.

SLIDE AND FOLD ALUMINIUM SCREEN. THE PROPOSED BALCONY SCREEN SHALL ALLOW NATURAL VENTILATION AT ALL TIMES (INCLUDING THE TIMES WHEN THE SCREENS ARE FULLY CLOSED) AND ARE CAPABLE OF BEING FULLY RETRACTED.

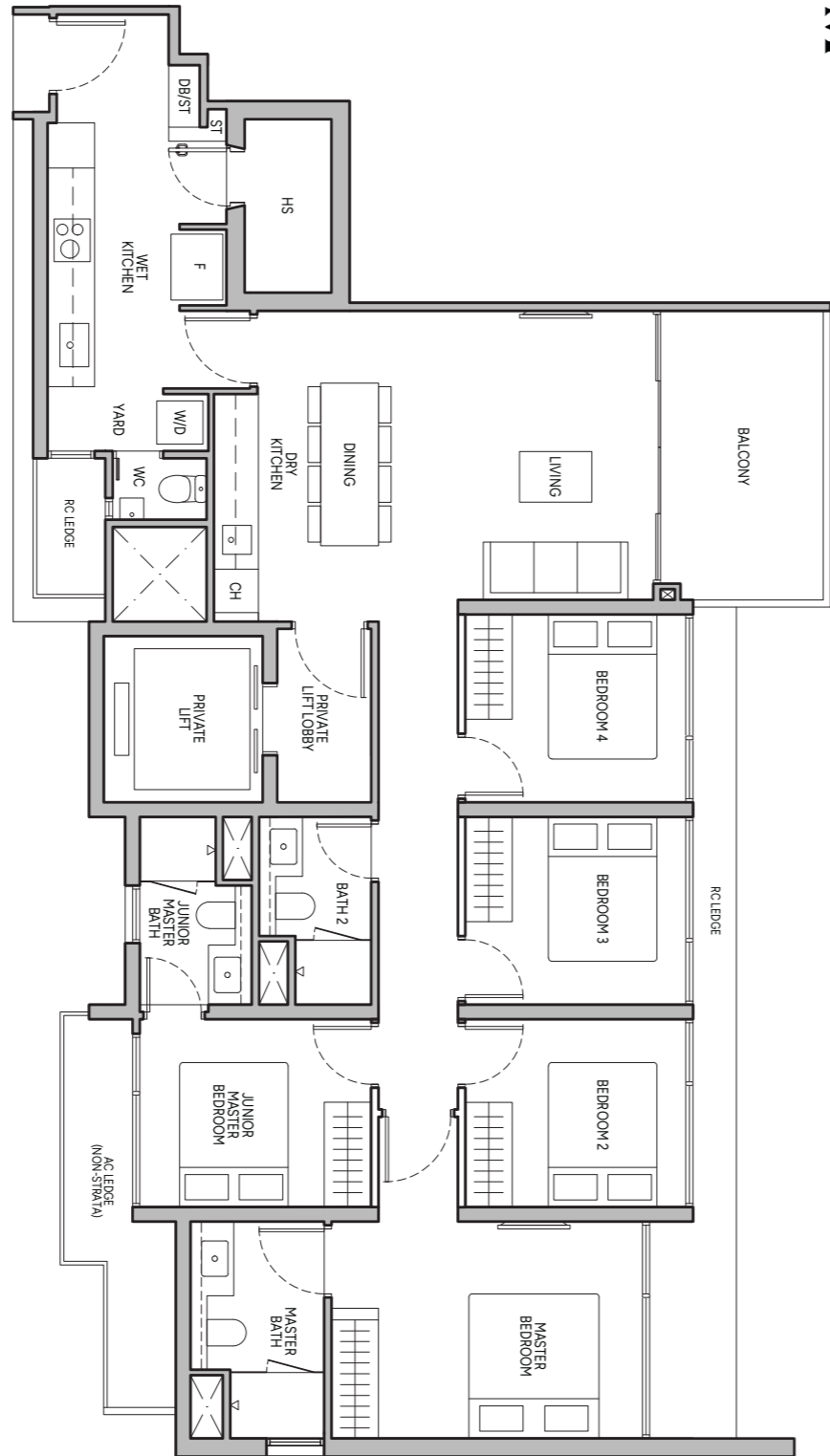
Note:  
The balcony shall not be enclosed unless with the approved balcony screen as shown above.  
The cost of screen and installation shall be borne by the Purchaser.  
Where required to facilitate installation, the Architect reserves the right to determine appropriate details not limited to fixing details and colour tones.

# 5-BEDROOM

## Type E1

135 sq m / 1453 sq ft

BLK 10 : #03-02 to #40-02

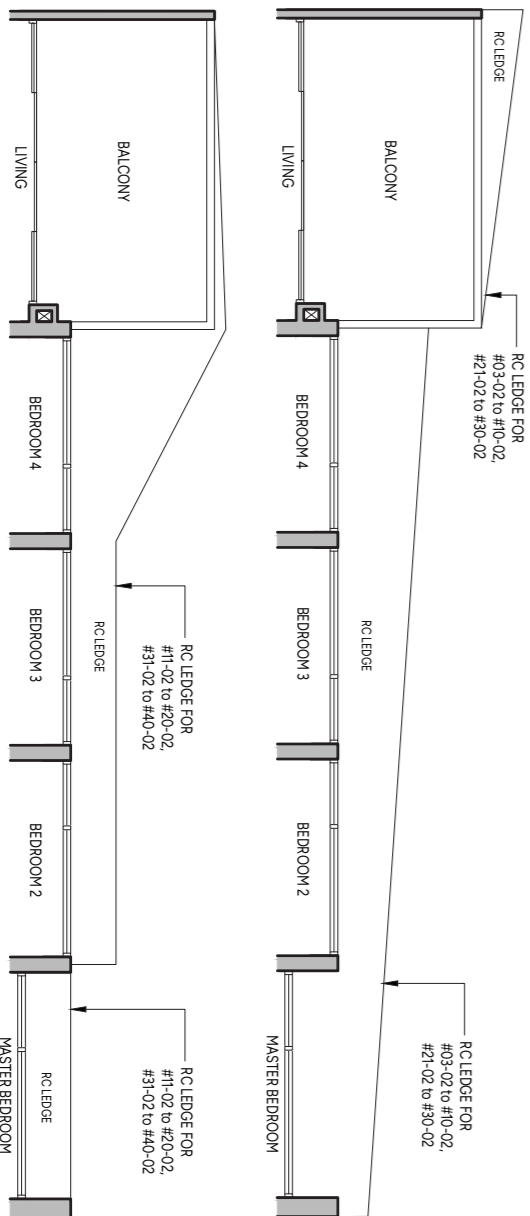


BLK 10 : #03-02 to #40-02

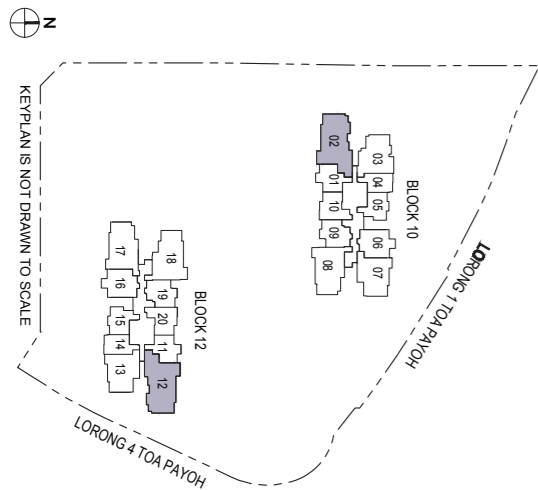


### Legend (Where Applicable)

- DIS/ST - Distribution Board/Storage
- WD - Washer cum Dryer
- W/C - Water Closet
- HS - Household Shelter
- RC - Reinforced Concrete
- F - Fridge
- AC - Air-Conditioner
- CH - Wine Chiller



Area includes balcony where applicable and excludes among others, the RC - Reinforced Concrete ledge and AC - Air Conditioner ledge. The plans are subject to change as may be required by relevant authorities. All floor plans and areas are subject to final survey. The balcony shall not be enclosed unless with the approved balcony screen, more particularly illustrated under the header "Approved Balcony Screen". Please refer to the letter containing the Particulars, Documents and information relating to the development and the unit for the floor plan relating to the unit you intend to purchase. The Sale and Purchase Agreement contains the entire agreement between the developer and the purchaser and supersedes and cancels in all respects all previous representations, warranties, promises, inducements or statements of intention, whether written or oral made by the developer and/or the developer's agent which are not embodied in the Sale and Purchase Agreement.



KEYPAN IS NOT DRAWN TO SCALE